

Cite as: Koliopoulos, T., Papakonstantinou, D. (2023). Landfill Emissions and Safe Landscape Upgrade – Sustainable Designs for Agritourism Facilities, vol. 6, issue 1, pp. 41-49, Journal Emerging Environmental Technologies and Health Protection (JEETHP), ISSN 2623-4874, e-ISSN 2623-4882, <https://www.telegeco.gr/JEETHP6I1A3.pdf>

Landfill Emissions and Safe Landscape Upgrade - Sustainable Designs for Agritourism Facilities

Koliopoulos, T.¹, Papakonstantinou, D.¹

¹ Telegeco Research Development, Athens, Greece,

Abstract

The presented working study describes the use of sustainable design techniques and proposed digital tools and techniques for safe land uses, landscape upgrade that could be developed for qualitative alternative types of tourism like agricultural tourism at closed landfill sites, operational brown fields. The working study methodology is based on sanitary digital drawings that could be utilized properly their topographical geometries and geoinformation for reading, learning, associated training applications. Useful conclusions are made for the architectural upgrade at closed landfill sites, land uses for sustainable agritourism facilities and public health protection at post COVID-19 era and in climate change management.

Keywords: Safe land uses, geoinformation techniques, mapping out utilities, surveying digital tools, sustainable green agritourism, sanitary digital drawings, environmental architecture, public health.

Corresponding Author: Koliopoulos, T., Telegeco Research and Development, Athens, Greece.

E-mail: t.kol@hotmail.com

1. INTRODUCTION

Nowadays, useful digital sanitary drawings, geoinformation data should be used within useful digital architectural tools and techniques that should be applied for sustainable applications at brownfields, landfills, soil health protection, bioremediation projects, designs for all and sustainable safe agritourism facilities, smart tourism, promoting particular alternative types of tourism. Also several learning applications could be used also for educational tourism purposes and training staff between tourists and stakeholders for particular tourism activities and training techniques using digital sanitary drawings, proper digital tools, techniques based on virtual learning materials, relative content with avatars, 3d digital objects and particular digital utilities for safe qualitative alternative types of tourism like veterinary one supporting green tourism facilities [1-16, 26-36, 49-60].

The landfill should be monitored regularly for any signs of potential issues such as ground water contamination, leachate leakage, or gas emissions. Monitoring techniques may include the use of wells, gas probes, and surface water sampling to ensure that the landfill is operating as intended and is not causing harm to the surrounding environment

Sustainable design solutions should be considered when constructing and operating a landfill. This may include using alternative daily cover materials, implementing recycling programs, or utilizing renewable energy sources such as landfill gas for energy production. Surveying applications can also be used to ensure that the landfill is being constructed and managed in accordance with regulatory requirements.

Soil health and cover maintenance are also important aspects of landfill management. Proper soil health can help prevent erosion and maintain the stability of the landfill mound. Regular maintenance of the landfill cover, including repairing any damage or erosion, is essential to prevent the escape of contaminants and maintain the integrity of the landfill structure [17-25, 37-46].

Overall, it is important for decision makers in solid waste management to understand the key terms and concepts related to landfill construction and operation in order to effectively manage landfill sites and ensure the protection of the environment and public health.

2. ENVIRONMENTAL ARCHITECTURE FOR LANDSCAPE UPGRADE AT CLOSED LANDFILLS – SANITARY DIGITAL DRAWINGS

Nowadays, digital architectural tools are necessary for proper upgrade landscape at brownfields, landfills, sustainable green tourism facilities. Such utilities are described below with their relative software, associative firmware that can be found at internet [12-13, 55-59].

- AutoCAD: A popular software used by architects and designers for creating precise 2D and 3D drawings of buildings, landscapes, and other structures.
- SketchUp: A 3D modeling program that allows architects to quickly and easily create detailed landscapes, buildings, and other designs.
- Lumion: A real-time 3D visualization tool that allows architects to create stunning visualizations of their landscape designs.
- VizTerra: A landscape design software that provides architects with a wide range of tools for creating detailed 3D models of outdoor spaces.
- Land F/X: A landscape architectural design software that integrates with AutoCAD and allows architects to create detailed plans for outdoor spaces.
- DynaSCAPE: A landscape design software that helps architects and designers create detailed planting plans, site plans, and 3D models of outdoor spaces.

- **Rhino3D:** A versatile 3D modeling tool that allows architects to create complex and detailed designs of buildings, landscapes, and other structures.
- **GardenCAD:** A software specifically designed for landscape designers, GardenCAD provides tools for creating detailed plans and designs for outdoor spaces.

However, sanitary drawings and proper digital drawings for sustainability, health and safety can be used as a base for landscape upgrade at brownfields, closed landfill sites. Hence, at brownfields, sanitary landfill sites a digital architectural landscape upgrade could be established based on landfill designs and sanitary drawings for biogas exploitation so as to cover energy needs for renewable resources like electricity, heating, lighting.

Moreover, modern biomass crane series could be properly designed for harsh industrial environments, making it ideal for biomass energy plants. Its advanced controls and proper automation technology that is available could ensure precise and efficient material handling, improving overall plant productivity.

In addition to its reliability and efficiency, proper use of biomass crane also offers safety features such as overload protection, emergency stop devices, and collision avoidance systems. These features help to protect both the equipment and the operators, ensuring safe and smooth operations. Proper architectural digital designs could be used so as to apply efficient steel or composites lightweight structures within optimum beam designs as well as frame designs and their associative site surveying geospatial applications. Several applications could take place for qualitative applied green tourism and architectural upgrade landscape at closed landfill sites, brownfields for people to walk, play with pets, or visit at safe places zoo parks and other particular veterinary tourism units supporting alternative types of tourism in order to promote local goods and services.

Proper risk management of landfill emissions should exist taking into account digital utilities for safe open spaces in terms of monitoring schemes about landfill gas production, odors, leachates and

settlements [9-11, 18-26, 38-44, 60-67].

Surveying digital tools could be used properly for safe environmental architectures supporting social activities at Sustainable Agritourism facilities and safe landscape upgrade at landfills, brownfields.

The relative investigated methodology is described in this section in terms of proper use of digital drawings, utilities for the right project management within architectural landscape design and safe sustainable tourism facilities at post COVID-19 era and in climate change. To integrate architectural digital tools for landscape upgrade and sustainable tourism facilities, a comprehensive methodology can be followed [35-36, 60-67]:

Site Analysis: Begin by conducting a detailed analysis of the existing site conditions, including topography, vegetation, soil quality, water bodies, climate, and surrounding built environment. This will help in identifying the key characteristics and constraints of the site that need to be considered in the design process.

Digital Surveying: Utilize digital surveying tools such as LiDAR scanners, drones, and 3D modeling software to create accurate digital models of the site. This will provide a detailed understanding of the existing conditions and help in visualizing the proposed design interventions.

Concept Development: Use parametric design tools and software to explore various design concepts that respond to the site conditions and project requirements. This can include generating design options for landscape elements, tourism facilities, circulation patterns, and sustainable features such as green roofs, rain gardens, and renewable energy systems.

Environmental Analysis: Conduct environmental analysis using simulation tools to assess the performance of the design in terms of sunlight exposure, wind patterns, temperature modulation, and water management. This will help in optimizing the design for sustainability and comfort.

Collaborative Design: Collaborate with multidisciplinary teams including architects, landscape architects, engineers, environmental consultants, and stakeholders to integrate their expertise into the design process. Use BIM (Building Information Modeling) software to facilitate coordination and communication between team members.

Virtual Reality and Augmented Reality: Use VR and AR learning technologies to create immersive experiences of the proposed design, allowing stakeholders to visualize and experience the project before construction. This can help in gaining feedback and making informed decisions about the design maintenance and associative training.

Digital Fabrication: Utilize digital fabrication tools such as CNC machines, 3D printers, and robotic construction equipment to prototype and fabricate custom elements for the landscape and tourism facilities. This can help in achieving a high level of precision, efficiency, and sustainability in safe designs, constructions.

Monitoring and Evaluation: Implement digital monitoring systems such as sensors and IoT (Internet of Things) devices to track the performance of sustainable features, energy consumption, water usage, and visitor behavior. This data can be used to assess the effectiveness of the design and make adjustments for continuous improvement.

By following this investigated methodology, stakeholders, engineers, architects, can leverage digital tools to upgrade landscapes and create sustainable tourism facilities that enhance the visitor experience while minimizing environmental impact [73-76].

Based on the above useful results could be established taking into account relative sanitary drawings at proper project management for land uses exploitation [6, 12-13, 49-50]. Hence, for an investigated brownfield area for upgrade environmental architecture, landfill near areas are presented at useful architectural landscape upgrade solutions based on relative sanitary drawings applying proper safe design facilities utilizing CAD ones, like free cad, libre office or acad developed by autodesk other ones [12-13, 41-45, 49, 60-67].

Proper principles about landscape upgrade, digital drawings and representation of photos for the promotion of several sites as travel destination applying several digital drawing tools and visual effects combining CAD utilities, digital image processing, like 3ds max and other ones should be applied on topographies [77-78].

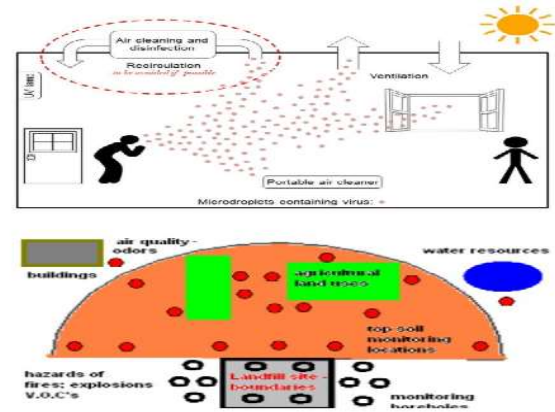


Figure 1. Digital drawings for design solutions, safe environmental architectures, safe ecological green tourism facilities, educational upgrade landscape at bioremediated brownfields, closed landfills at post COVID era [71,72].

Based on figure 1, are presented drawings at indoor, outdoor environment. Proper marketing advertisements for alternative types of tourism also could exist so as to promote reclaimed sites for particular alternative types of tourism at outdoors activities. In this way could be created useful travelling experiences within safe facilities, efficient green tourism designs, clean technologies, safe eco-tourism veterinary activities, like physiotherapeutic horse riding and landscape upgrade at bioremediated brownfields, closed landfills, promoting particular areas at smart cities within tourism activities [16, 25-29, 34-55]. The latter reclamation project facilities should have maintenance and to be supported within particular robust sustainable designs, surveying digital tools, mapping out techniques, digital techniques and geoinformation utilities, supporting sanitation standards due to post COVID era and in climate change management. Proper combination of geo-information digital utilities, digital sanitary drawings and digital architectural drawings, techniques and tools should exist within relative indicative veterinary standards and guidelines that should be applied for landscape architectural upgrade at particular associative safe sustainable facilities.

Moreover, proper drawings and landscape architectural upgrade design principles should be followed combined with virtual learning digital tools, techniques and utilities promoting sustainable green tourism, environmental health and public health protection [16, 25-29, 34-55]. Therefore, ready blocks of drawings in dxf format, dwg format or other formats could be used for training and learning purposes, as well as 3D printing objects for associative applications in educational qualitative architectural green tourism within 3D user interactions education between tourists and

stakeholders.

Moreover, stakeholders should take into account the selection of trees that are appropriate for the site conditions, such as soil type, sunlight exposure, and climate. Also stakeholders should ensuring that types of trees i.e bamboo ones are placed strategically to provide shade, screening, and aesthetic appeal, incorporating trees of different heights and sizes to create a layered and dynamic landscape. Proper types of trees should exist that could be maintained at brownfields, landfill sites [4-13, 60-67].

Overall, by following these guidelines and utilizing computer aided design, a well-planned and visually appealing architectural landscape upgrade can be achieved through the proper selection and placement of trees. However, considering the long-term maintenance needs of the trees, such as pruning, watering, and fertilizing, in the design process proper cranes and mechanical equipment should exist for the sustainability and public health protection at post COVID-19 era so as to support people that injured during the pandemic and due to lock downs that existed.

Moreover, proper mechanical equipment placement is needed for the right project management at brownfields, bioremediation projects and associate projects that promote sustainable development, productivity and protecting environmental health, public health due to climate change and reclamation, remediation projects that are needed after particular extreme weather events.



Figure 2. Beam system to support associative mechanical crane equipment for biomass plants and other relative land uses for agritourism and safe activities at brownfields.

Overall, the biomass crane is the ideal solution for biomass energy plants looking to optimize their material handling processes. With its durability, versatility, and advanced technology, it can help improve productivity, reduce downtime, and enhance overall plant operations like bioremediation projects. Trust reliable technologies to deliver a reliable and

efficient solution for proper biomass material handling needs at architectural landscape upgrading brownfields for sustainable tourism outdoors.

Proper lightweight lifting equipment includes ergonomic lifters, pneumatic lifts, electronic lifters, and manual lifters that can easily be adjusted and customized to meet your specific needs. These lifting solutions are designed to enhance efficiency, productivity, and safety in the workplace, while also reducing the risk of workplace injuries and strain. Useful lifters for landfill landscape upgrade, brownfield sites and sustainable tourism activities should be equipped with various features such as adjustable height, easy maneuverability, and customizable attachments to facilitate lifting and moving different loads of varying sizes and weights. They are also designed to be user-friendly, allowing operators to easily control and adjust the lifting equipment to meet their requirements.

Whether you need to lift and transport heavy materials, assemble parts, or perform maintenance tasks, the right selection of light lifting equipment provides the flexibility and versatility you need. With proper lifting solutions, stakeholders can easily adapt to changing production processes and ensure a safe and efficient work environment for your employees. Proper use of light lifting equipment should be investigated based on project management necessities for an architectural landscape upgrade and how it can improve relative workstation operations.

3. LANDFILL EMISSIONS AND PROJECT MANAGEMENT POLICY FOR SAFE AGRICULTURAL TOURISM FACILITIES

Landfill emissions are an inevitable results for operational or closed landfills, associative brownfields [4-17, 60-62]. In figure 3, a useful project management framework policy is presented below for the right decision making at particular reclamation, remediation projects. The latter could be applied for the promotion of qualitative educational tourism, alternative types of tourism at outdoors with architectural landscape upgrade at closed landfill sites, brown fields. Proper use of digital utilities, drawings, sustainable designs, surveying applications should exist and mapping properly the results for safe green tourism associated facilities within architectural landscape upgrade, safe particular construction facilities next to closed landfill sites, brown fields [12-13, 63-67].

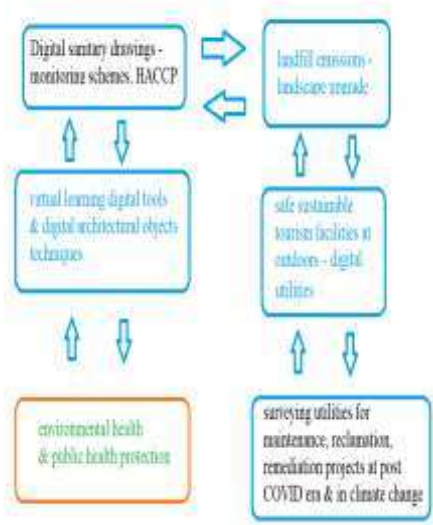


Figure 3. Working policy framework for recreational land uses within agritourism and right project management within safe upgrade landscape at closed landfills, brownfields.

Based on figure 3 the right measures should exist and decision making for safe veterinary tourism units, alternative types of tourism. Design for all should exist taking into account the emergency circumstances due to climate change. Proper smart digital tools and techniques should exist in order to achieve sustainability, environmental health, robust, efficient surveying applications within the right use of digital utilities and Virtual learning applications should exist for tourists, training staff and stakeholders. Monitoring schemes, HACCP should exist for soil health and safe landscape architectural upgrade next to closed landfills.

The landfill emissions stages should be taken into account for the proper reclamation of closed landfill sites. Mainly the biogas emissions should be taken into account combining the particular monitoring schemes results with available data about leachates and landfill settlements [1-2, 9-14]. In figure 4, are presented the stages of a landfill site in terms of biogas and fig.5 monitoring schemes, red bullets HACCP. Proper treatment and monitoring schemes should exist for landfill emissions for safe sustainable tourism development and public health protection [8-11, 27-36, 68-70].

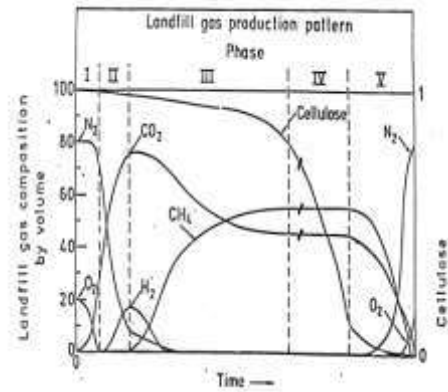


Figure 4. Biogas emissions and biodegradation stages at landfill site.

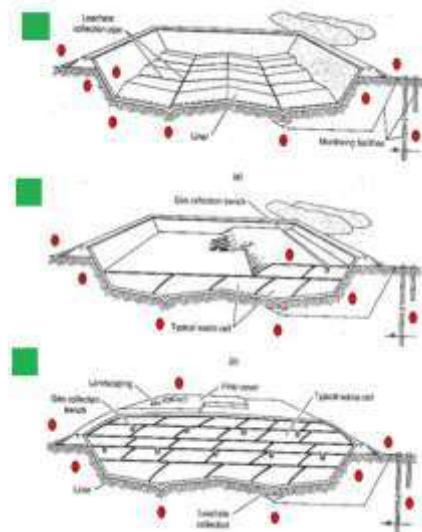


Figure 5. Flow diagram, sanitary drawing for monitoring schemes of landfill emissions, HACCP systems, during the biodegradation stages at landfill sites.

Digital drawing results could be used with relative open source digital utilities so as to promote safe sustainable green tourism travel destinations within digital landscape architecture upgrade at closed landfill sites, brownfields, safe green spaces, determining safe areas for tourism activities for users, tourists interactions supporting proper monitoring schemes [12-14, 35-39, 43-45]. Stakeholders and team of experts

should find proper solutions finding the right lifting solution for the specific needs of particular sites architectures in terms of safety and promotion of particular infrastructures for qualitative alternative types of tourism such as agricultural tourism and veterinary tourism at safe open spaces. Proper monitoring schemes should exist in planning safe open spaces within landscape upgrade at closed landfill sites, associated brownfields, supporting social activities.

4. CONCLUSIONS

In conclusion, proper use of sanitary digital drawings, digital architectural design tools, virtual learning techniques for planning and implementation of landfill closure and post-closure care measures are crucial to minimizing environmental hazards and ensuring the long-term safety of closed landfills. By following proper monitoring digital drawing techniques within useful architectural digital tools, designs for landscape upgrade and standards for safety guidelines and regulations, landfill stakeholders can effectively manage the potential risks associated with closed landfill sites, associated brownfields and protect the surrounding environment and public health.

Ongoing monitoring and maintenance of the landfill site are necessary to address settling, erosion, drainage, leachate, and gas issues that may arise over time. By following best practices in landfill closure and post-closure care, landfill owners can fulfill their responsibility to safeguard the environment and public health for years to come. In this way sustainability can be achieved for safe sustainable tourism facilities, promoting associative experiences within alternative types of tourism, and also is protected environmental health and public health. Hence, useful sustainable development designs could be achieved for architectural landscape upgrade, safe sustainable green tourism facilities, environmental health and public health protection at post COVID-19 era and in climate change management.

REFERENCES

[1] Aldrich, T., Griffith, Environmental Epidemiology and Risk Assessment, Editure Reinhold, N.Y. U.S.A., 1993.
[2] ISO 14001:2015, Standards and Regulations for Investigation, Monitoring, Management, Certification and Improvement of Environmental Systems, ISO Publications, 2015.
[4] Babatsikou, F., Koliopoulos, T., Koutis, C., Efficient design

of a community health infrastructure and public health protection in emergencies, Review Clinical pharmacology and pharmacokinetics, International Edition, Pharmakon Press, vol. 31, 2017, p. 79-84.
[5] Jones, C.B., Geographical Information Systems and Computer Cartography, Longman Press, 1997.
[6] Koliopoulos, T., Babatsikou, F., Koutis, C., Design Evaluation of a Communal Care Building Facility for People with Alzheimer's Disease, International Journal of Caring Sciences, vol. 9, no. 2, 2016, p. 348-357.
[7] Koliopoulos, T., Babatsikou, F., Koutis, C., Effective Sustainable Design of a Care Communal Building Facility for People with Musculoskeletal Disorders, International Journal of Caring Sciences, vol. 9, no. 2, 2016, p. 704-716.
[8] Blackman, C., Paige, C., Cuffaro, N., Sears, L., Industrial Design, Rockport, USA, 2013.
[9] Cottingham, M., Mastering AutoCAD VBA, Sybex publications, 2001.
[10] Tchobanoglous, G., Theisen, H., Vigil, S., Integrated Solid Waste Management, McGraw, USA, 1993.
[11] Tchobanoglous, G., Burton, F., Stensel, D., Wastewater Engineering, Treatment and Reuse, McGraw, USA, 2003.
[12] Koliopoulos, T et al. (2018). A Project Management Geoinformatics utility for Health Protection and Sanitary Drawings in Green Constructions - Infrastructure Works, Journal of Engineering Studies and Research – Volume 24 (2018) No. 4, pp. 3237.
[13] Koliopoulos, T., Ciarkowska, K., Antonkiewicz, J., Theocharatos, S., Radu, C. Cristea, I., Kouloumpis, P. (2018). A project management utility for agricultural facilities and public health, Journal of Engineering Studies and Research, 24(2), pp. 32-40.
[14] Shirinzadeh, B. (2001). CAD-Based Task Planning and Analysis for Reconfigurable Workholding for Workpiece Positioning and Constrain in Operational Methods in Computer Aided Design, Computer Aided Design Engineering and Manufacturing Systems Techniques and Applications, vol. 3, pp. 80-109
[15] Koliopoulos, T., K., Sharma, S., K., Nerantzis, E., T., Leachates" treatment of toxic hazardous chemicals for public health protection, pp. 19-30, J. Emerging Environmental Technologies and Health Protection, vol.1, 2018, ISSN 2623-4874 e-ISSN 2623-4882 <https://www.telegeco.gr/2.pdf>
[16] Tchobanoglous, G., F. L. Burton, and H. D. Stensel (2003) Wastewater Engineering: Treatment and Reuse, McGraw-Hill, publications
[17] Wu, Y.Y., Zhou, S.Q., Qin, F.H., Ye, X.Y., Zheng, K. (2010) Modeling physical and oxidative removal properties of Fenton process for treatment of landfill leachate using response surface methodology (RSM). J. Hazard Mater., vol. 180, p.456-465.
[18] Wu, Y.Y., Zhou, S.Q., Ye, X.Y., Chen, D.Y., Zheng, K., Qin, F.H. (2011) Transformation of pollutants in landfill leachate treated by a combined sequence batch reactor, coagulation, Fenton oxidation and biological aerated filter technology. Process Saf. Environ., vol. 89, issue 2, p.112-120.
[19] Xu, Z.Y., Zeng, G.M., Yang, Z.H., Xiao, Y., Cao, M., Sun, H.S., Ji, L.L., Chen, Y. (2010) Perspectives on technology for landfill leachate treatment, Bioresour Technol, S2573, vol. 101, p.79-86.
[20] Xu, J., Long, Y.Y., Shen, D.S., Feng, H.J., Chen, T., (2017) Optimization of Fenton treatment process for degradation of refractory organics in pre-coagulated leachate membrane concentrates. J. Hazardous Materials, vol. 323, p.674-680.
[21] Yabroudi, S.C., Morita, D.M., Alem, P. (2013) Landfill Leachate Treatment Over Nitritation/Denitritation in an Activated Sludge Sequencing Batch Reactor?, APCBEE Procedia, vol. 5, p.163-168.
[22] Yahmed, A.B., Saidi, N., Trabelsi, I., Murano, F., Dhaifallah, T., Bousselmi, L., Ghrabi, A., (2009) Microbial characterization during aerobic biological treatment of landfill leachate, Desalination, vol. 246, issues 1-3, p.378-388.
[23] Schroeder, P. R., et al. (1984) The Hydrologic Evaluation of Landfill Performance (HELP) Model, Documentation for

Version I, EPA/530/SW-84-010, 2, U.S. EPA Office of Solid Waste and Emergency Response, Washington, DC.

- [24] Tchobanoglous, G., F. L. Burton, and H. D. Stensel (2003) *Wastewater Engineering: Treatment and Reuse*, McGraw-Hill, publications
- [25] Beetham, H., & Sharpe, R., "Rethinking pedagogy for a digital age, designing and delivering e-learning", 2007, Routledge, ISBN 13: 978-0-415-40873-8 .
- [26] Cheng, V. C. C., Wong, S. C., To, K. K. W., Ho, P. L., & Yuen, K. Y., "Preparedness and proactive infection control measures against the emerging novel coronavirus in China". *Journal of Hospital Infection*, 2020, 104(3), 254–255. <https://doi.org/10.1016/j.jhin.2020.01.010>
- [27] Ciarkowska, K., Gambus, F., Antonkiewicz, J., & Koliopoulos, T., Polycyclic aromatic hydrocarbon and heavy metal contents in the urban soils in southern Poland. *Journal Chemosphere*, 2019, 214–226. <https://doi.org/10.1016/j.chemosphere.2019.04.209>
- [28] Koliopoulos, T., Kouloumbis, P., Ciarkowska, K., Antonkiewicz, J., "Gambus, F., Mebarek-Oudina, F., Pal, M., Berhanu, G., Environmental Health Landfill Emissions – Environmental Resources Utilities for Soil Health and Sustainable Development", vol. 3, pp. 76-91, *Journal Emerging Environmental Technologies and Health Protection*, 2020 ISSN 2623-4874, e-ISSN 2623-4882 https://www.telegeco.gr/3_8.pdf
- [29] Dereka, D., Karlb, S., Swapnab, G., & Aldoc, D., "Social media enabled human sensing for smart cities". *AI Communications*, 2016, 29(1), 57–75. <https://content.iospress.com/articles/aicomunications/aic683>
- [30] Elliot, K., "Precast concrete structures", 2017, CRC Press.
- [31] Gonzalez, M. C., Hidalgo, C. A., & Barabasi, A. L., "Understanding individual human mobility patterns", *Journal Nature*, 453(7196), 779, 2008. <https://doi.org/10.1038/nature06958>
- [32] Collins, F., Orpen, D., Fay, C., Foley, C., Smeaton, A.F., Diamond, D., "Web-based monitoring of year-length deployments of autonomous gas sensing platforms on landfill sites", *Proceedings of IEEE SENSORS*, 2011, Limerick, Ireland.
- [33] Hashem, I. A. T., Chang, V., Anuar, N. B., Adewole, K., Yaqoob, I., Gania, A., Ahmed, E., & Chiromac, H., "The role of big data in smart city". *International Journal of Information Management*, 36(5), 2016, pp. 748–758, <https://doi.org/10.1016/j.ijinfomgt.2016.05.002>
- [34] Koliopoulos, T., "Environmental energy designs–ecohealth policy and economy", Lambert Publishers, 2019. https://scholar.google.com/scholar_lookup?title=Environmental%20energy%20designs%20ecohealth%20policy%20and%20economy&publication_year=2019&author=Koliopoulos%20T
- [35] Sahni, Y., Cao, J., & Shen, J., "Challenges and opportunities in designing smart spaces", In B. Di Martino, K. C. Li, L. T. Yang, & A. Esposito (Eds.), *Internet of everything*. Singapore, pp. 131–152. Springer, 2018.
- [36] Waddell, P., "UrbanSim: Modeling urban development for land use, transportation, and environmental planning", *Journal of the American Planning Association*, 68(3), 2002, pp. 297–314. <https://doi.org/10.1080/01944360208976274>
- [37] Wang, Y. C., "Steel and composite structures behaviour and design for fire safety", 2002, Spon Press.
- [38] Whitman, A., & DeJohn, S., "Organic gardening for dummies" (2nd ed.), 2009, Wiley Publishing.
- [39] Yun, Y., & Lee, M. "Smart city 4.0 from the perspective of open innovation", *Journal of Open Innovation: Technology, Market, and Complexity*, 5(92), 2019, 15. <https://doi.org/10.3390/joitmc5040092> .
- [40] Zhang, X., Li, W., Zhang, F., Liu, R., & Du, Z., "Identifying urban functional zones using public bicycle rental records and point-of-interest data", *ISPRS International Journal of Geo-Information*, 7(12), 459, 2018, 16. <https://doi.org/10.3390/ijgi7120459>
- [41] Koliopoulos, T. K. "Digital Transformation Utility for Landfill Gas Emissions and Safety of Infrastructures: Risk Management Public Health Policy for Safe Community Health

Tourism's Infrastructures at Post COVID-19 Era," *2021 International Conference on Engineering Management of Communication and Technology (EMCTECH)*, Vienna, Austria, 2021, pp. 1-4, doi: 10.1109/EMCTECH53459.2021.9619173.

- [42] Koliopoulos, T. K.. "Digital Utilities for Sustainable Constructions at Landfills Supporting Safe Community Health Infrastructures and Humanity Protection in Risk at post COVID-19 era," *2021 IEEE International Conference on Engineering Veracruz (ICEV)*, Boca del Río, Veracruz, Mexico, 2021, pp. 1-5, doi: 10.1109/ICEV52951.2021.9632630.
- [43] Gonzalez, M. C., Hidalgo, C. A., & Barabasi, A. L. (2008). Understanding individual human mobility patterns. *Journal Nature*, 453(7196), 779. <https://doi.org/10.1038/nature06958>
- [44] Beetham, H., & Sharpe, R. (2007). *Rethinking pedagogy for a digital age, designing and delivering e-learning*. Routledge, ISBN 13: 978-0-415-40873-8.
- [45] Koliopoulos T. K. Mratskova, G. P., "Digital Training, Teaching, Entertainment Utility for Disable and Elderly at Community Health & Agricultural Tourism Infrastructures," *2023 9th International Conference on Virtual Reality (ICVR)*, Xianyang, China, 2023, pp. 284-287, doi: 10.1109/ICVR57957.2023.10169333.
- [46] Koliopoulos, T.K., 1 , Kouloumbis, P., Ciarkowska, K., Antonkiewicz, J. (2018). Soil covers and Landfill Management for Agricultural Food Protection, *J. Emerging Environmental Technologies and Health Protection*, vol. 1, p.116-130, ISSN 2623-4874 e-ISSN 2623-4882 , <https://www.telegeco.gr/8.pdf>
- [47] Rothery, B., 1995 ISO 14000 and ISO 9000 series of quality standards, London (UK), Gower Pubs.
- [48] Schnoor, J.S. (1996). *Environmental Modeling, Fate and Transport of Pollutants in Water, Air, and Soil*, John Wiley and Sons publisher, N.Y, U.S.A.
- [49] Shamsi U.M. (2005) *GIS Applications for Water, Wastewater, and Stormwater Systems*, CRC Press.
- [50] Sharma, S.K., Mudhoo, A. (2010) *Green Chemistry for Environmental Sustainability*, CRC Press.
- [51] Licht, L., Isebrands, J. (2005) *Linking phytoremediated pollutant removal to biomass economic opportunities*, *Biomass Bioenergy*, 28, pp. 203-218.
- Lawrence, D. (2003) *Environmental Impact Assessment*, John Wiley & Sons, New Jersey, USA
- [52] Liebig, M.A., Franzluebbers, A.J., Follett, R.F. (2012) *Managing Agricultural Greenhouse Gases*, Academic Press.
- [53] Luedeking, R., Piret, E. L. (1959) *Transient and steady states in continuous fermentation, Theory and experiment*, *J. Biochem. Microbiol. Tech. Engr.*, 1(4), pp. 431-459.
- [54] McCarty, P. L. (1971) *Energetics and bacterial growth*, In *Organic Compounds in Aquatic Environments*, ed. Faust S.D., Hunter, J.V., publications Dekker, M. Inc., New York, pp. 495-553.
- [55] Cantrell, B. , Michaels, W. (2010). *Digital Drawing for Landscape Architecture: Contemporary Techniques and Tools for Digital Representation in Site Design*, John Wiley, USA.
- [56] Rendell, J., Penner, B., Borden, I. (1999). *Gender, Space, Architecture: An Interdisciplinary Introduction*. London: Routledge
- [57] Borden, Iain; Kerr, Joe; Pivaro, A., Rendell, J. (Eds.) 1996. *Strangely Familiar: Narratives of Architecture in the City*. London: Routledge
- [58] Borden, Iain; Rendell, J. (Eds.) 2000. *InterSections: Architectural Histories and Critical Theories*. London: Routledge
- [59] Borden, Iain; Kerr, Joe; Pivaro, A., Rendell, J. (Eds.) 2001. *The Unknown City: Contesting Architecture and Social Space*. Cambridge: The MIT Press.
- [60] Jones, Peter Lloyd. "Drawing for Designing." *Leonardo*, Vol. 17, No. 4 (1984): 269–276.
- [61] Leggitt, Jim. *Drawing Shortcuts: Developing Quick Drawing Skills Using Today's Technology*. New York: Wiley, 2002.
- [62] Reid, Grant. *Landscape Graphics*. London: Watson-Guption, 2002.
- [63] Sullivan, C., *Drawing the Landscape*. New York, NY:

Wiley, 2004.

[64] Treib, Marc. Representing Landscape Architecture. New York: Routledge, 2008.

[65] Tufte, Edward R. Envisioning Information. New York: Graphics Press, Cheshire, 1992.

[66] Tufte, Edward R. The Visual Display of Quantitative Information, 2d ed. New York: Graphics Press, 1992.

[67] Waldheim, Charles. The Landscape Urbanism Reader. New York: Princeton Architectural Press, 2006.

[68] Nur, A. C., Koliopoulos, T., Guntur, M., Wahyuni, S. (2022). Tourism Sustainability Through the New Normal Era Tourism Area Development Strategy, vol. 5, issue 2, pp. 26-38, Journal Emerging Environmental Technologies and Health Protection (JEETHP), ISSN 2623-4874, e-ISSN 2623-4882, <https://www.telegeco.gr/JEETHP5I2A2.pdf>

[69] Tewari, A., Pal, M., Koliopoulos, T. (2022). Japanese Encephalitis: A vector-borne viral disease of public health significance, vol. 5, issue 2, pp. 43-54, Journal Emerging Environmental Technologies and Health Protection (JEETHP), ISSN 2623-4874, e-ISSN 2623-4882, <https://www.telegeco.gr/JEETHP5I2A4.pdf>

[70] Pal, M., Shuramo, M. Y., Gutama, K.P., Koliopoulos, T. (2022). Listeriosis and Its Public Health Implications, vol. 5, issue 1, pp. 17-29, Journal Emerging Environmental Technologies and Health Protection (JEETHP), ISSN 2623-4874, e-ISSN 2623-4882, <https://www.telegeco.gr/JEETHP5I1A1.pdf>

[71] Covaci, A. (2020) How can airborne transmission of COVID-19, indoors be minimised ?, J. Environment International 142, 1058325
<https://reader.elsevier.com/reader/sd/pii/S0160412020317876?token=261885876488C607669647221FE3AD8160BDA1205DD722EA807CEBEFF590C208817AA0BD0D39375164B366207FD39FC>

[72] Koliopoulos T., Kouloumbis, P., Ciarkowska, K., Antonkiewicz, J. (2019). Emerging Environmental Technologies and Health Protection (2) ISSN 2623-4874, e-ISSN 2623-4882
J. (2018). Soil covers and Landfill Management for Agricultural Food Protection, Emerging Environmental Technologies and Health Protection (1), ISSN 2623-4874 e-ISSN 2623-4882, pp. 116 – 130, Telegeco.

[73] Koliopoulos, T., Kouloumbis, P., Papakonstantinou, D., Hilcenko, S. (2020) Mitigation of Environmental Health Risks Within Safe Openings at Buildings Close To Sanitary Bioreactors, vol. 3, pp. 103-117, Journal Emerging Environmental Technologies and Health Protection, ISSN 2623-4874, e-ISSN 2623-4882 https://www.telegeco.gr/3_10.pdf

[74] Koliopoulos, T., Kouloumbis, P., Papakonstantinou, D., Hilcenko, S. (2020) Mitigation of Environmental Health Risks Within Safe Openings at Buildings Close To Sanitary Bioreactors, vol. 3, pp. 103-117, Journal Emerging Environmental Technologies and Health Protection, ISSN 2623-4874, e-ISSN 2623-4882 https://www.telegeco.gr/3_10.pdf

[75] Koliopoulos, T., Papakonstantinou, D., Hilcenko, S., Pal, M. (2022). Environmental health utility for air pollutants monitoring at construction facilities – promotion of safe sport green tourism infrastructures at post COVID-19 era, vol. 5, issue 1, pp. 53-59, Journal Emerging Environmental Technologies and Health Protection (JEETHP), ISSN 2623-4874, e-ISSN 2623-4882, <https://www.telegeco.gr/JEETHP5I1A4.pdf>

[76] Koliopoulos T., Kouloumbis, P., Ciarkowska, K., Antonkiewicz, J. (2018). Soil covers and Landfill Management for Agricultural Food Protection, Emerging Environmental Technologies and Health Protection (1), ISSN 2623-4874 e-ISSN 2623-4882, pp. 116 – 130, Telegeco.

[77] Chaudhary, D.G., Gawali. B.W. (2018). Design and Modeling with Autodesk 3DS Max, International Journal of Computer Science and Information Security (IJCSIS), Vol. 16, No. 6, June 2018, pp. 66-85.

[78] Akca, D., (2012). 3D Modeling of Cultural Heritage Objects with A Structured Light System. Mediterranean Archaeology and Archaeometry, 12, 139-152.

[79] Challis, K., (2005). Airborne Laser Altimetry in Alluviated Landscapes. Archaeological Prospection, pp. 103-127.